

4000

YH-4000

HEADPHONES

Specifications

Headphone Type	Over-Ear
Housing	Open-back
Driver	ORTHODYNAMIC™ (Planar magnetic)
Frequency Response	5 Hz - 70 kHz
Sensitivity	97 dB/mW (at 1kHz)
Impedance	34 Ω (at 1kHz)
Weight	320 g
Accessories	(Cable) Unbalanced cable: 3.5 mm 3-pole plug & 6.3 mm screw-on adaptor, Length: Approx. 2 m (Earpads) Artificial suede / PU leather (Carrying case) Dimension: W228 x H130 x D283 mm



IMMERSE YOURSELF IN THE HEAT OF MUSIC

Combining precision craftsmanship with premium materials, the YH-4000 headphones set a new benchmark in authentic sound reproduction. At their core lies Yamaha's signature Orthodynamic™ driver, revealing the presence and passion of every performance through exceptional clarity and depth. Designed for effortless, extended listening, the YH-4000 invites dedicated music enthusiasts to rediscover the distinctive allure of Orthodynamic™ sound.



FEEL THE ARTIST'S PASSION



TRUE SOUND

Yamaha occupies a truly unique position in the global audio industry, deeply involved in every stage from music creation to the moment it reaches the listener, fully attuned to the artist's intent. The YH-4000 places you directly in the front row of the performance, delivering a profound musical experience filled with dynamic realism and spatial expressiveness. Experience vocals charged with deep, authentic emotion. Feel the powerful, rhythmic grooves of drums and bass. Sense the delicate, airy ambience of a live performance, capturing even the shared energy between artist and audience.



TONAL BALANCE

The Orthodynamic™ drivers and spacious housings reproduce sound with remarkable accuracy, delivering high-density, natural audio across the full sonic spectrum. Every vocal and instrument is faithfully rendered with precise timbral integrity. The result is powerful, lifelike sound quality that draws you deeply into the music.

FULLY COMMITTED TO SONIC ACCURACY

YAMAHA'S UNIQUE ORTHODYNAMIC™ DRIVER

In the 1970s, Yamaha introduced the planar magnetic Orthodynamic™ driver, beginning with the HP-1, which earned acclaim from audiophiles worldwide. The YH-4000 features a redesigned Orthodynamic™ driver, modernized using advanced technologies. By intentionally omitting the sound absorbing material featured in the flagship YH-5000SE and meticulously tuning every detail, Yamaha achieves a uniquely responsive, natural, and precise Orthodynamic™ sound.



NUANCED MUSICAL DETAIL EXPANSIVE SOUND FROM OPEN-BACK HOUSING

The generously sized housings wrap comfortably around the ear with an open-back design that provides substantial internal acoustic volume. This configuration optimizes airflow, allowing the thin-film diaphragm to operate under ideal conditions and effectively eliminating unwanted resonance from reflected sound within the rear cavity. A newly developed PET mesh filter precisely regulates internal housing pressure, while an arch-shaped protrusion acts as a reflector to further enhance sonic accuracy. Together, these innovations deliver natural instrument and vocal reproduction, capturing delicate sonic expressions clearly, from initial note to gentle decay.



DYNAMICS

The YH-4000 goes beyond sheer power, faithfully preserving the contrast between silence and motion in music. From subtle textures to bold low-end impact, it delivers fast, precise response with rich detail. This level of control and expression allows the listener to experience the full energy and nuance of the performance.

FAITHFULLY RECREATING MUSICAL DYNAMICS ULTRA-LIGHTWEIGHT, THIN-FILM DIAPHRAGM

The diaphragm features conductive coils on both sides and finely corrugated wave-like patterns across its surfaces. Far lighter than a conventional dynamic driver, it responds with remarkable precision, revealing subtle nuances and airy detail in every performance. Micro-perforation air dampers on both sides control movement with care, preserving the natural dynamism of music without distortion or loss of energy.

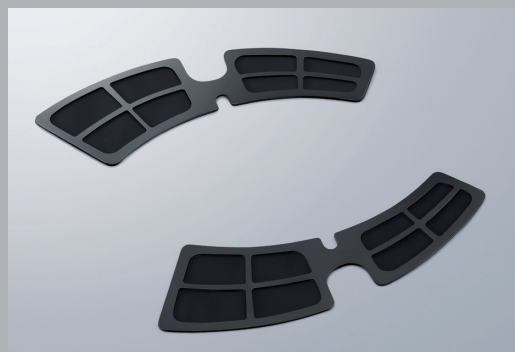


SOUND IMAGE

From the openness of concert halls to the intimacy of small clubs, the YH-4000 faithfully reproduces spatial detail and sonic ambience. You can sense the position of each performer and even their subtle movements as if you were right there in the room, watching the performance unfold before you.

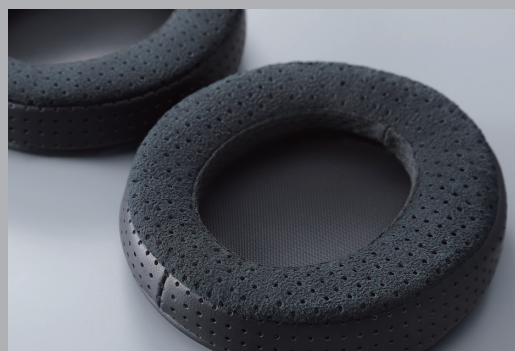
SOUND WITH REMARKABLE SPACIOUSNESS AND DENSITY

To achieve a dense midrange and tight, punchy low-end while preserving a spacious and open sound, a PET mesh filter is used to precisely regulate internal housing pressure. After evaluating a range of finely woven materials with varying airflow characteristics, we selected the filter with ideal permeability to match the sound vision for the YH-4000. The result is a sound that fully conveys the artist's passion and energy.



EAR PADS FOR DEEP IMMERSION IN THE MUSIC

Developed exclusively for the YH-4000, these premium ear pads combine two materials: high-quality artificial suede on the inner surface and exceptionally flexible PU leather around the outer edge. This hybrid construction blends the warmth of suede with the resolution and control of leather. Fine perforations across the entire surface contribute to a spacious, open sound. The soft, velvet-like texture and gentle cushioning create a comfortable, enveloping feel that is ideal for extended, immersive listening.



FINE QUALITY, COMFORTABLE WEARABILITY

Lightweight construction and refined design make the YH-4000 exceptionally easy to wear and so comfortable you may forget you have them on. This effortless fit enhances extended listening sessions and allows you to immerse more deeply in the music with both comfort and style.



SLIM, LIGHT AND COMFORTABLE LIGHTWEIGHT MAGNESIUM BODY

The housing frame is made of magnesium, a metal known for its excellent vibration damping properties and high structural rigidity. Despite its strength, the body remains lightweight at just 320 grams, making it comfortable and unobtrusive even during extended listening.



TWO-LAYER HEADBAND AND SMOOTH STEPLESS SLIDER

The headband features a solid stainless steel arm that showcases the material's refined texture while applying optimal lateral pressure to minimize fatigue on the ears and head. The head pad, which rests directly against the head, uses a three-dimensional weave with moderate thickness to flex naturally and evenly distribute pressure. The stepless slider allows for precise, personalized adjustment to ensure a consistently comfortable fit.



SNUG FIT INCLINED SWIVEL MECHANISM

To prevent air leakage and preserve rich low-frequency response, it is critical that the housing fits securely behind the ear. The YH-4000 achieves this with an inclined swivel mechanism that tilts the rotation axis, allowing subtle vertical movement to stabilize surface pressure. This snug, comfortable fit enhances both acoustic performance and overall listening enjoyment.



QUALITY THAT INSPIRES PRIDE IN OWNERSHIP AND USE

The YH-4000 reflects the full breadth of Yamaha's craftsmanship and design sensibility, created to be used with pride and cherished over time, like a finely made musical instrument. Every detail has been carefully considered, with no compromises, resulting in a sense of dignity that befits a high-end model.

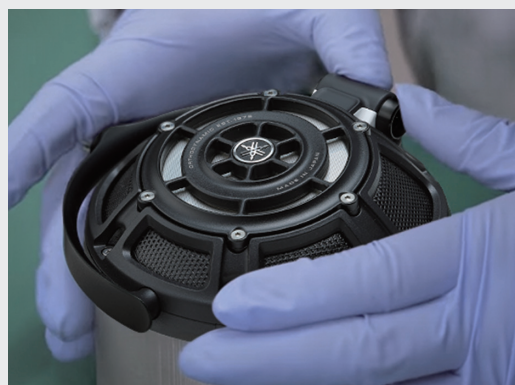
DESIGN AND HIGH-QUALITY TEXTURE ATTAINING FUNCTIONAL BEAUTY

The design has been reduced to its essential form to express the energy and movement inherent in music. A bold open gap in the housing is protected by a triaxial woven mesh, a material widely used in the aerospace industry. The YH-4000 is built around the concept of functional beauty, with premium materials chosen for both performance and appearance. Every component reflects Yamaha's commitment to purposeful design and refined craftsmanship.



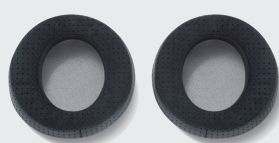
HANDMADE BY SKILLED CRAFTSMEN SPECIAL FACTORY FOR FLAGSHIP MODELS

From driver construction to final assembly, the YH-4000 demands exceptional technical skill and precision. That is why it is produced at Yamaha's Kakegawa factory, the same facility that builds our flagship models of grand pianos and audio components. Each unit is carefully assembled by skilled craftsmen under the highest standards of quality control.



ACCESSORIES

Headphone Earpads



HEP-5000LS

Artificial suede (surface) / PU leather (sides)

Headphone Cable



Unbalanced silver-coated OFC cable
with 3.5mm 3-pole plug & 6.3mm
screw-on adaptor

Headphone Carrying Case



CCS-5000

A semi-hard case to carry or store
the YH-4000 headphones and cable