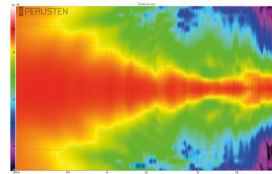
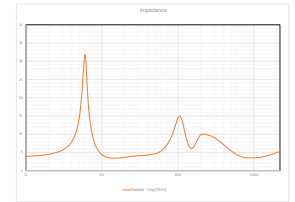


Horizontal Directivity



Vertical Directivity



Impedance

## MODEL R5c



## TECHNICAL SPECIFICATIONS



Designed to be mounted on optional stand, or mounted to a wall with our tilt swivel bracket. Sharing "trickle-down" technology from our flagship S-Series, the DPC-Array here based on three 26mm domes, guarantees excellent directivity control and timbre matching with all R-Series speakers. The Silk diaphragms developed ground up, chosen specifically their smooth, effortless representation of midrange and treble. The 165mm woofers are made from our proprietary HPF pulp, two years in development, bringing new technology to one of the oldest materials used in loudspeaker design.

### BASIC

**Dimensions (HxWxD)**  
240 x 550 x 270mm  
9.5 x 21.6 x 10.6"

**Weight**  
15.0 kg (33.0 lbs.)

**Available finishes**  
High Gloss Black

### TECHNICAL

**Enclosure Alignment**  
3-way acoustic suspension

**Driver complement**  
DCP-Array: 26mm(3) Silk dome  
Woofers: 165mm(2) HPF diaphragms

**Sensitivity**  
88.6dB / 2.83v / 1.0m

**Impedance**  
4Ω nominal / 3.4Ω min

**Response Linearity**  
80 - 20kHz +/-1.5dB window

**Frequency Response (-10dB)**  
49 - 32kHz

**Typical In Room bass extension**  
44Hz

**Recommended Amplifier Power**  
100 - 250W RMS

**SPL capability @1m (100-20kHz)**  
112.6dB peak  
111.0dB peak <3% - 2nd, 3rd Harmonics

**Certification**  
THX Dominus, THX Ultra



**DPC-Array**  
Directivity pattern control  
\*USA Patent pending



**HPF (Hybrid Pulp Formulation)**  
Diaphragms made from mixed long fiber hardwood, bamboo and wool

