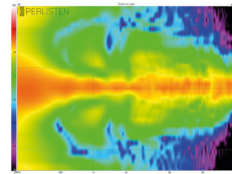
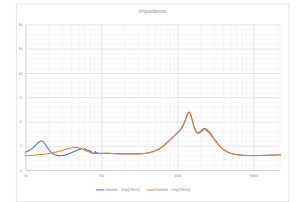


Horizontal Directivity



Vertical Directivity



Impedance

MODEL R7t



TECHNICAL SPECIFICATIONS



Designed as a stand alone 2ch high fidelity speaker with the versatility to be used as part of multi-channel systems. Sharing "trickle-down" technology from our flagship S-Series, the DPC-Array here based on three 26mm domes, guarantees excellent directivity control and timbre matching with all R-Series speakers. The Silk diaphragms developed ground up, chosen specifically their smooth, effortless representation of midrange and treble. The 165mm woofers are made from our proprietary HPF pulp, two years in development, bringing new technology to one of the oldest materials used in loudspeaker design. The R7t can be aligned as bass reflex or acoustic suspension depending on specific tastes. Rich, dynamic bass matched with advanced mid/treble directivity pattern control and silky highs offer best in class performance.

BASIC

Dimensions (HxWxD)
1268 x 230 x 350mm
49.9 x 9.0 x 13.7"

Weight
48.0 kg (105.6 lbs.)

Available finishes
High Gloss Black

TECHNICAL

Enclosure Alignment

4-way bass reflex / acoustic suspension

Driver complement

DCP-Array: 26mm(3) Silk dome
Woofers: 165mm(4) HPF diaphragms

Sensitivity

90.0dB / 2.83v / 1.0m

Impedance

4Ω nominal / 3.1Ω min

Response Linearity

80 - 20kHz +/-1.5dB window

Frequency Response (-10dB)

Bass reflex: 27 - 32kHz
Acoustic suspension: 38 - 32kHz

Typical In Room bass extension

Bass reflex: 19Hz
Acoustic suspension: 30Hz

Recommended Amplifier Power

100 - 400W RMS

SPL capability @1m (100-20kHz)

116.0dB peak
116.0dB peak <3% - 2nd, 3rd Harmonics

Certification

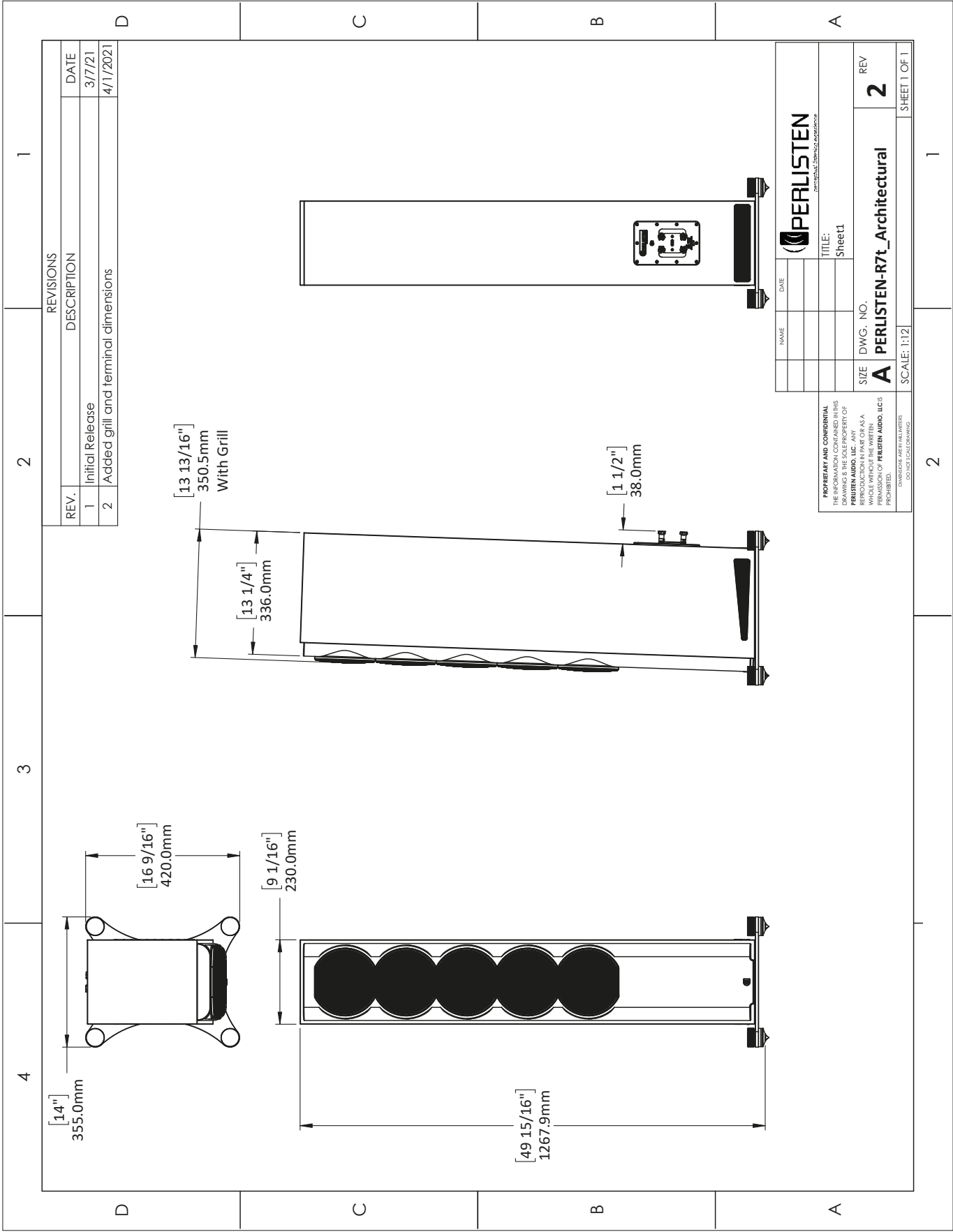
THX Dominus, THX Ultra



DPC-Array
Directivity pattern control
*USA Patent pending



HPF (Hybrid Pulp Formulation)
Diaphragms made from mixed long fiber hardwood, bamboo and wool



REVISIONS		
REV.	DESCRIPTION	DATE
1	Initial Release	3/7/21
2	Added grill and terminal dimensions	4/1/2021

 <small>PERLISTEN AUDIO, LLC</small>		NAME DATE
TITLE: Sheet1		SIZE DWG. NO.
PROPRIETARY AND CONFIDENTIAL THE INFORMATION CONTAINED IN THIS DRAWING IS THE SOLE PROPERTY OF PERLISTEN AUDIO, LLC. ANY REPRODUCTION OR TRANSMISSION, IN ANY FORM OR BY ANY MEANS, WITHOUT THE WRITTEN PERMISSION OF PERLISTEN AUDIO, LLC IS PROHIBITED. <small>DRAWINGS ARE IN MILLIMETERS UNLESS OTHERWISE SPECIFIED</small>		REV 2
SIZE A		DWG. NO. PERLISTEN-R7t_Architectural
SCALE: 1:12		SHEET 1 OF 1