

TRUE WIRELESS SURROUND SYSTEMS

TRUE X



TRUE X BARS

SR-X50A / SR-X40A

TRUE X SPEAKERS

WS-°X1A / WS-X2A / WS-X3A

TRUE X SUB

SW-X100A



YOU MOVE THE SOUND. THE SOUND MOVES YOU.



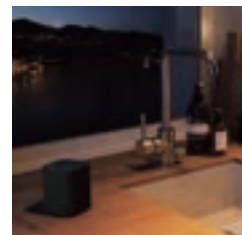
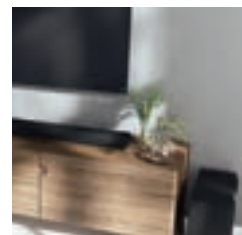
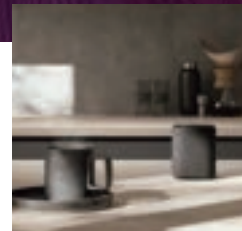
THE TRUE X SERIES REDEFINES HOME ENTERTAINMENT

The total system of True X bars and True X speakers*, brought powerfully together as one, gives you amazingly real surround sound that transforms your listening space with a single button press. This is our own unique truly wireless surround technology we call True X Surround.



IMMERSIVE AND FLEXIBLE REAL SURROUND SOUND

If you thought you knew what a home theater was, think again. Escape in your favorite movies and music with the freedom of easy placement. The True X bars connect wirelessly to the surround True X speakers, which can be put anywhere in your room. Set your sound free.



ULTIMATE PORTABILITY

Portable. Flexible. Rechargeable. The True X speakers also function as portable Bluetooth® speakers. Just hit the Solo button and you've got music wherever you go!



MUSIC IS LIFE

True X lets you take your entertainment anywhere you want, anytime you want. And the more you use it, the more it blends into your daily life. Create the soundtrack to your life!

* The True X series includes the SR-X50A/X40A* Soundbar, the WS-X3A*/X2A*/X1A* Portable Wireless Speaker, and the SW-X100A* Wireless Subwoofer. * Sold separately.



YAMAHA TRUE SOUND WITH DOLBY ATMOS®

Enter an exciting new sonic world where our unique True Sound heritage intersects with Dolby Atmos®—and creates a breathtakingly three-dimensional state-of-the-art sound space.



AMAZINGLY WIDE SOUND FIELD

The sonic possibilities created by height speakers are stunning and beyond what you can imagine. Carefully selected by our sound engineer, these speakers spatial depth not found any other manufacturer.

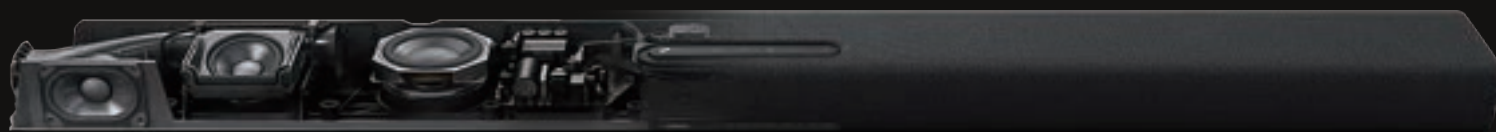
ROOM-FILLING BASS

Ready to feel like you are in the middle of the action? With a wireless subwoofer, the True X bar 50A adds powerful and expressive bass that transforms your space into a sonic universe that you can feel.



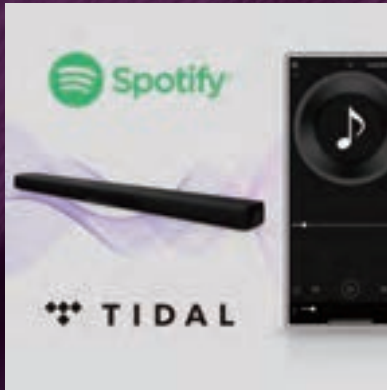
THE OPTIMAL EXPRESSION OF TRUE SOUND

The True X bar 50A has been engineered for true sound optimization. Everything from the rear chamber to the uniquely designed bass reflex port to the fabric were chosen for their ability to reproduce delicate nuances in sound.



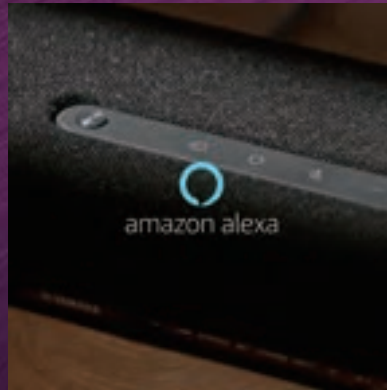


THIS IS YOUR NEW ENTERTAINMENT HUB



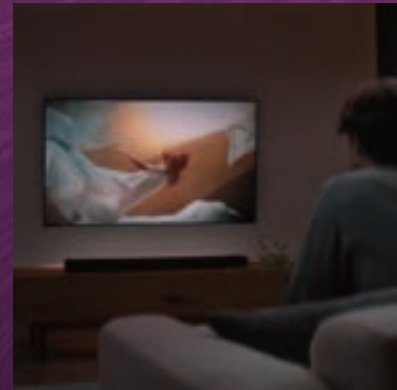
CONNECT TO THE WORLD

Discover new music with the compatible streaming services on the dedicated smartphone app, and enjoy your world of entertainment expanding right in the living room. *Music streaming service availability varies by region.



RESPONDS TO YOUR VOICE

No need for a remote control or even an app! Control volume, inputs and music just by giving vocal commands.



CONTROL-LINKED TO YOUR TV

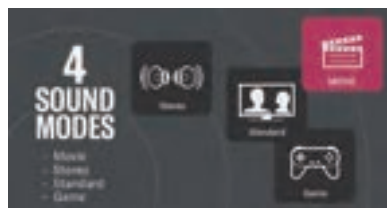
Since it features HDMI-CEC and eARC compatibility, you can connect to a TV with a single cable, and use your TV remote control to operate basic functions on the True X bar. Power on/off and volume are automatically linked for even greater convenience.

OTHER ADVANCED FEATURES



CLEAR VOICE

Find it hard to hear TV dialogue? Our Clear Voice technology makes human voices more audible. Hear every word—from YouTube videos to movies and shows, especially when background music and sound effects try to take center stage.



FOUR SOUND MODES

With four different sound modes, you can match the sound to your content and mood. Stereo mode works great for music and podcasts. Standard mode is ideal for TV programs. Try Game mode to immerse yourself in your latest battle, and use Movie mode to create an expansive theater experience.



BASS EXTENSION

The True X bar 50A incorporates a built-in 75mm (3") subwoofer unit and dual passive radiator. In addition, the "Bass Extension" enhances any bass signal to ensure a rich and powerful sound.

APP



SOUND BAR CONTROLLER

The Sound Bar Controller app provides easy operation for select Yamaha Sound Bars using your smartphone and tablet device.



TRUE X BAR

SR-X50A



Front Speaker System

Maximum Output Power	(Front L/R) 30 W/ch, (Height L/R) 30 W/ch [6 ohms 1 kHz, 10% THD], (Internal Subwoofer) 30 W x 2 [6 ohms 100 Hz, 10% THD]
Driver Unit	(Front) Dual 4.6 [1-3/4"] x 6.6 cm [2-5/8"] cone, (Height) Dual 5.2 cm [2"] cone, (Subwoofer) 7.5 cm [3"] cone type
Frequency Response	(Front) 220 Hz-22 kHz, (Height) 220 Hz-22 kHz, (Subwoofer) 100 Hz-220 Hz
Terminals	(Inputs) HDMI: 1, Optical Digital: 1,
Network	(Output) HDMI: 1 [ARC/eARC] Bluetooth®, Wireless LAN (Wi-Fi), Wireless output, Ethernet
Dimensions (W x H x D)	1015 X 63 X 112 mm; 40" x 2-1/2" x 4-3/8"
Weight	3.9 kg; 8.5 lbs
Wireless Subwoofer	Same as SW-X100A.

SR-X40A



Maximum Output Power	(Front L/R) 30 W/ch, (Height L/R) 30 W/ch [6 ohms 1 kHz, 10% THD], (Internal Subwoofer) 30 W x 2 [6 ohms 100 Hz, 10% THD]
Driver Unit	(Front) Dual 4.6 [1-3/4"] x 6.6 cm [2-5/8"] cone, (Height) Dual 5.2 cm [2"] cone, (Subwoofer) 7.5 cm [3"] cone type
Frequency Response	(Front) 220 Hz-22 kHz, (Height) 220 Hz-22 kHz, (Subwoofer) 55 Hz-220 Hz
Terminals	(Inputs) HDMI: 1, Optical Digital: 1,
Network	(Output) HDMI: 1 [ARC/eARC] Bluetooth®, Wireless LAN (Wi-Fi), Wireless output, Ethernet
Dimensions (W x H x D)	1015 X 63 X 112 mm; 40" x 2-1/2" x 4-3/8"
Weight	3.9 kg; 8.5 lbs

TRUE X SPEAKERS

WS-X1A



Maximum Output Power	10 W (1 kHz, 10% THD)
Driver Unit	5.5 cm (2-1/8") Full-range, Passive radiator x 2
Frequency Response	75 Hz-20 kHz
Terminals	(Inputs) USB Type C
Network	Bluetooth® (Ver.5.0), Wireless (5 GHz)
Power Supply	USB Type C or Charging terminal (CC-T1A)
Built-in Battery	Battery life: 12 hours (Charging time: 3 hours)
Dimensions (W x H x D)	88 x 105 x 88 mm; 3-1/2" x 4-1/8" x 3-1/2"
Weight	0.50 kg; 1.10 lbs

WS-X2A



Maximum Output Power	9 W x 2 (1 kHz, 10% THD)
Driver Unit	Dual 5.5 cm (2-1/8") Full-range, Passive radiator x 2
Frequency Response	60 Hz-20 kHz
Terminals	(Inputs) USB Type C
Network	Bluetooth® (Ver.5.0), Wireless (5 GHz)
Power Supply	USB Type C or Charging terminal (CC-T1A)
Built-in Battery	Battery life: 12 hours (Charging time: 4 hours)
Dimensions (W x H x D)	78 x 192 x 78 mm; 3-1/8" x 7-1/2" x 3-1/8"
Weight	0.8 kg; 1.76 lbs

WS-X3A



Maximum Output Power	10 W x 2 (1 kHz, 10% THD)
Driver Unit	Dual 5.8 cm (2-1/4") Full-range, Passive radiator x 2
Frequency Response	55 Hz-20 kHz
Terminals	(Inputs) USB Type C
Network	Bluetooth® (Ver.5.0), Wireless (5 GHz)
Power Supply	USB Type C or Charging terminal (CC-T1A)
Built-in Battery	Battery life: 12 hours (Charging time: 4 hours)
Dimensions (W x H x D)	88 x 220 x 88 mm; 3-1/2" x 8-5/8" x 3-1/2"
Weight	1.0 kg; 2.20 lbs

TRUE X SUB

SW-X100A



Maximum Rated Power	100 W (2 ohms, 10% THD)
Driver Unit	5.2 cm (6-1/4") cone type
Input	Wireless input: 1
Frequency Response	35 Hz - 100 Hz
Dimensions (W x H x D)	187 X 407 X 409 mm; 7-3/8" x 16" x 16-1/8"
Weight	9.4 kg; 20.7 lbs

●Music streaming services listed may not be available in your region. View Yamaha product website for details. ●Spotify and Spotify logo are registered trademarks of the Spotify Group. ●Amazon, Alexa, Amazon Music and all related logos are trademarks of Amazon.com, Inc. or its affiliates. Alexa may not be available in your region. View the Yamaha product website for details. ●TIDAL and TIDAL logo are registered trademarks of Aspiro AB in the European Union and other countries. ●The Bluetooth® word mark and logos are registered trademarks owned by Bluetooth SIG, Inc. and any use of such marks by Yamaha Corporation is under license. Other trademarks and trade names are those of their respective owners. ●The terms HDMI and HDMI High-Definition Multimedia Interface, and the HDMI Logo are trademarks or registered trademarks of HDMI Licensing Administrator, Inc. in the United States and other countries. ●Dolby, Dolby Vision, Dolby Atmos, and the double-D symbol are trademarks of Dolby Laboratories Licensing Corporation. Manufactured under license from Dolby Laboratories. Confidential unpublished works. Copyright © 2012-2022 Dolby Laboratories. All rights reserved. ●To control this AirPlay 2-enabled speaker, iOS 11.4 or later is required. Use of the Works with Apple badge means that an accessory has been designed to work specifically with the technology identified in the badge and has been certified by the developer to meet Apple performance standards. Apple, AirPlay, Apple TV, Apple Watch, iPad, iPad Air, iPad Pro, iPhone, and Lightning are trademarks of Apple Inc., registered in the U.S. and other countries.