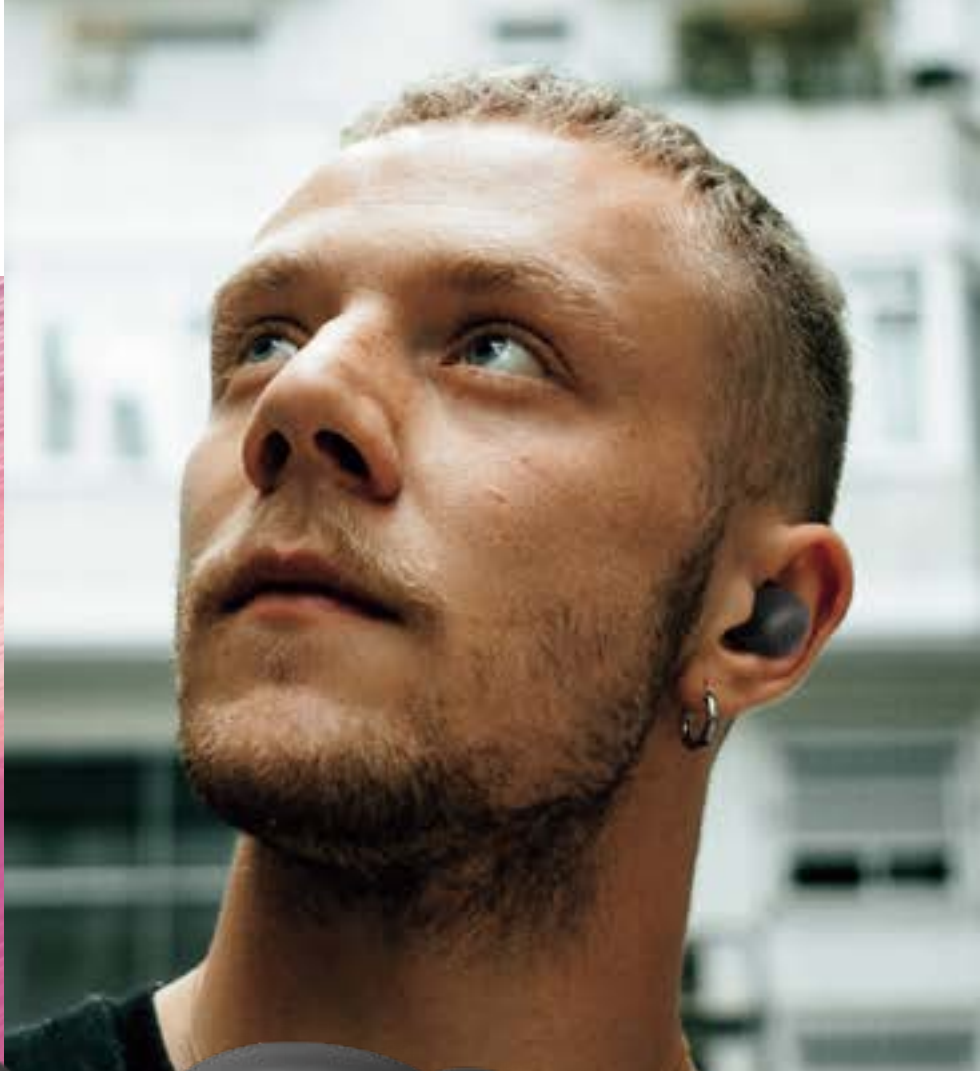


TW-E3B



## TW-E3B



### Type

Headphone Type      Canal / Truly Wireless  
Driver                      Dynamic / ø6.0

### Battery

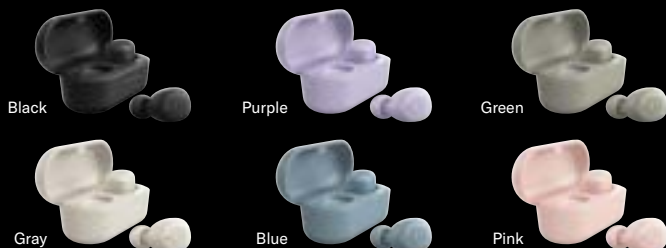
Charge Time              about 2H  
Usage Time                max 24H (6H + 3 recharges)

### Accessories

USB Power Cable      USB A-C (0.3m)  
Eartips                      4 sizes (XS/S/M/L)

### Features

Frequency Response      20Hz - 20kHz  
Weight (Earbuds)        5.0g each  
Mic                            ✓  
Waterproof                ✓  
IPX5  
Bluetooth (Version, codec) Bluetooth® V5.0, SBC/AAC/Qualcomm® aptX™  
Voice Control              Siri® / Google Assistant  
Listening Care             ✓ (Original)  
Yamaha Headphones Controller App      ✓



## COMFORTABLE FIT, MORE MUSIC ENJOYMENT

The compact housing ensures a snug fit, even for smaller ears with a 25% reduction in housing size compared to previous generation model. A non-slip coating has been applied to the inner section to ensure it fits tightly to small ears and exceptionally comfortable for long periods of listening. With four different size eartips, you can be sure to have the fit that's just right for you. In addition, operation buttons has been improved by reviewing their structure.



## ALWAYS STAY CLOSE TO THE MUSIC

You want to be able to spend as much time as possible with your favorite songs—so we included a long-life battery that can be used for roughly 6 hours on a single charge. What's more, with the charging case you can recharge for a total of 24 hours listening enjoyment (6H + 3 recharges). In addition, the charging case is equipped with 4 LED indicator that allows you to check the remaining battery level.



## CHOOSE YOUR COLOR

6 colors are available, 2 stylish monotone colors and 4 smoky colors in line with the latest trends. You can choose from a wide variety of colors to suit your fashion and taste.



## TRUE SOUND THAT CONVEYS THE ARTIST'S EXPRESSION

The compact size housing can be firmly inserted deep into the ear and prevents sound quality deterioration due to sound leakage. Thanks to tuning by Yamaha, the musical instrument manufacturer, we have achieved both low-frequency reproduction that gives a firm sense of volume and high-frequency reproduction that allows each sound to be heard clearly. While expressing the music with a high degree of energy, we have accomplished deeply immersive sound that allows you to feel the true intentions and feelings of artists and creators.



The Bluetooth® word mark and logos are registered trademarks owned by Bluetooth SIG, Inc. and any use of such marks by Yamaha Corporation is under license. Other trademarks and trade names are those of their respective owners. Qualcomm aptX is a product of Qualcomm Technologies, Inc. and/or its subsidiaries. Qualcomm is a trademark of Qualcomm Incorporated, registered in the United States and other countries. aptX is a trademark of Qualcomm Technologies International, Ltd., registered in the United States and other countries.