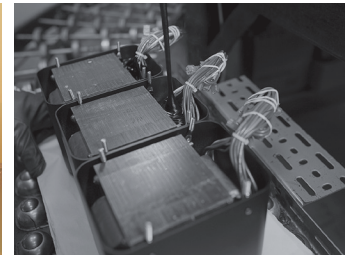


MC301 power amplifier

- The MC301 delivers a full 300 watts of power into a single channel at 2, 4 or 8 ohms.
- Our smallest current model mono block amplifier, the MC301 is perfect for smaller systems where higher power output levels are not needed.
- Mono block amplification is the ultimate in system configuration as each speaker has its own dedicated amp, which guarantees maximum channel separation and audio fidelity.
- Our proprietary Quad Balanced circuit design yields the highest power level with the least amount of distortion.
- McIntosh output Autoformers ensure every speaker receives full power regardless of its impedance while Power Guard® prevents clipping that could damage your speakers.
- Space saving design with slim 6" tall chassis, allowing it to fit where larger models won't.



Compact Yet Powerful McIntosh Amplification

McIntosh®

LEGENDARY PERFORMANCE™

www.mcintoshlabs.com

MC301 power amplifier

Power Output:

300 Watts minimum sine wave continuous average power output

Output Load Impedance:

Terminals for 8, 4 and 2 Ohms

Rated Power Band:

20Hz to 20kHz

Total Harmonic Distortion:

0.005% maximum harmonic distortion at any level from 250 milliwatts to rated power output

Overall Dimensions (W x H x D):

17-1/2" (44.45cm) x 6" (15.24cm) (including feet) x 21" (50.8cm) (including front panel and cables)

Weight:

67 lbs (30.4kg) net,
77 lbs (34.9kg) in shipping carton

Exclusive McIntosh Power Assurance System:

A collection of technologies that enhance performance and reliability while protecting the amplifier and loudspeakers.

Power Guard®:

A waveform comparison circuit continuously monitors both input and output signals. Power Guard dynamically adjusts the input level to avoid clipping while preventing harsh sounding distortion.

Sentry Monitor:

Fuse-less short-circuit protection circuit disengages the output stage before current exceeds safe operating level; resets automatically.



Output Autoformer:

Unique McIntosh technology delivers the full rated amplifier output with the least possible distortion into loudspeaker impedances of 2, 4, or 8 Ohms; you get all the power you paid for and the freedom to choose any loudspeaker.

Wattmeter:

Swift, accurate response reveals program peaks to make staying within the power limits of your loudspeakers is easy.

For the Consumer's Protection:

In order to ensure the highest level of customer satisfaction, "new" McIntosh products may only be purchased over-the-counter or delivered and installed by an Authorized McIntosh Dealer. McIntosh products that are purchased over the Internet, by phone or mail order are presumed to be "used" and do not qualify for any McIntosh Warranty. McIntosh does not warrant, in any way, products that are purchased from anyone who is not an Authorized Dealer or products that have had their serial number altered or defaced.



Companion Products

The McIntosh C50 Preamplifier, MR88 AM/FM/HD Tuner, MCD550 SACD/CD Player, MT10 Turntable, XR200 Loudspeakers, MEN220 Room Correction System and MPC1500 Power Controller are logical companions for the MC301 Amplifier. Your Authorized Dealer can provide additional information on other McIntosh products.

To learn more, please call us at 1.800.538.6576.

McIntosh®

LEGENDARY PERFORMANCE™

www.mcintoshlabs.com