

January 2011

IsOTek[®]

Multi award winning power management systems

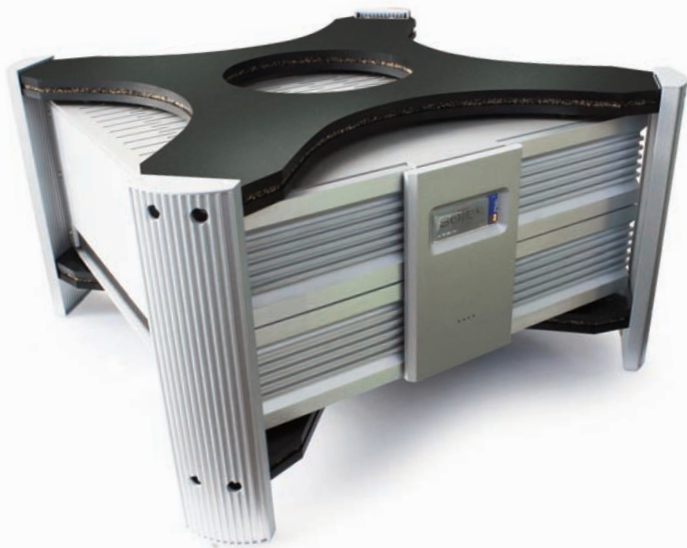
Super Titan Instruction Manual



Contents

General section

A. Introduction	The company The principles The execution	A.1 A.1 A.1
B. The product	Overview Features Safety	B.2 B.2 B.3
C. Installation	Placement Equipment coupling System integration	C.4 C.4 C.4
D. Troubleshooting	Fault finding	D.5
E. Specifications	Dimensions & sockets	E.6
G. Warranty		G.9



A. Introduction

The company



The company

IsoTek was formed in July 2001 with the vision to create high quality mains power distribution units that moved beyond current conventions. Through careful market analysis and extensive research we were able to launch products that moved power distribution forward to be recognised as an integral part of any audio or home theatre system. Our products continue to lead the way in power management systems, our latest EVO3 range galvanises our commitment to pursue excellence at every level.

The principles

We believe all products benefit from their own clean power supply, therefore we advocated the concept of using (smaller) individual filters on each component, with these being specifically designed for their purpose, this dramatically reduces and stops component cross contamination and dispels the belief that one size fits all. Every single component used in our designs is extensively tested for quality, reliability and purpose. Our circuit designs are extensively 'field' tested before coming to market so we can guarantee the widest compatibility with third party products.

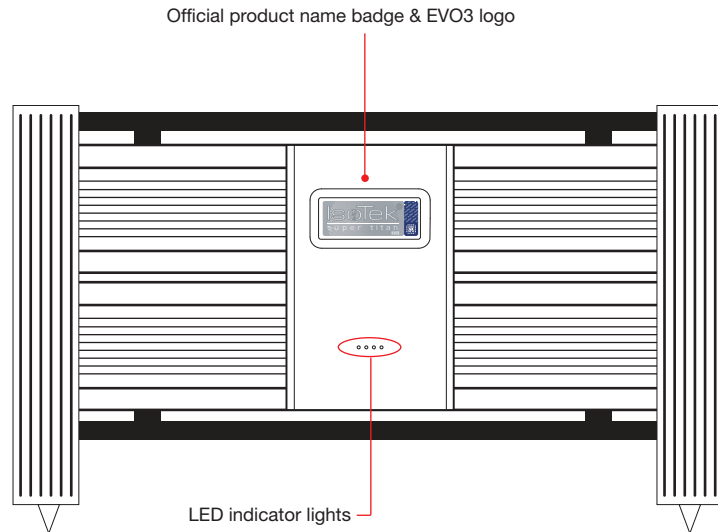
The execution

Within the market of premium audio it is vital to offer exceptional performance and value for money. Products must be made to the highest of standards, be reliable and attractive. A manufacturer must offer exceptional service, dealer training, support and undertake the very best in promotion design and literature. If all these elements are in place customers should experience excellence at every stage. Our continual quest is to meet these challenges.

All of our products are professionally designed in England with deep consideration given to both style, functionality, performance and value for money. Our European manufacturing facility offers a multi-award winning hand built product line.

B. The product

Front elevation of the unit



Overview

Thank you for purchasing the IsoTek Super Titan. The Super Titan continues our multi award winning range and offers an unprecedented level of performance specifically for high current devices such as power amplifiers. It has been designed to offer an uncompromised level of power delivery close to 10,000 Watts with a transient ability over of 35,000 Watts. Super Titan is the ultimate high-end high power conditioner on the market.

Features

At the rear of the unit you will note four high quality silver plated locking Neutrik powercons rated at 32 Amps. These four outlets are individually isolated to stop cross contamination and any component cross talk. They are in no way connected to each other. Thus each connected component has a clean supply.

Supplied with the Super Titan are two high current 32 Amp cables, one to power the unit the second to connect a component. Additional power cords can be purchased as needed.

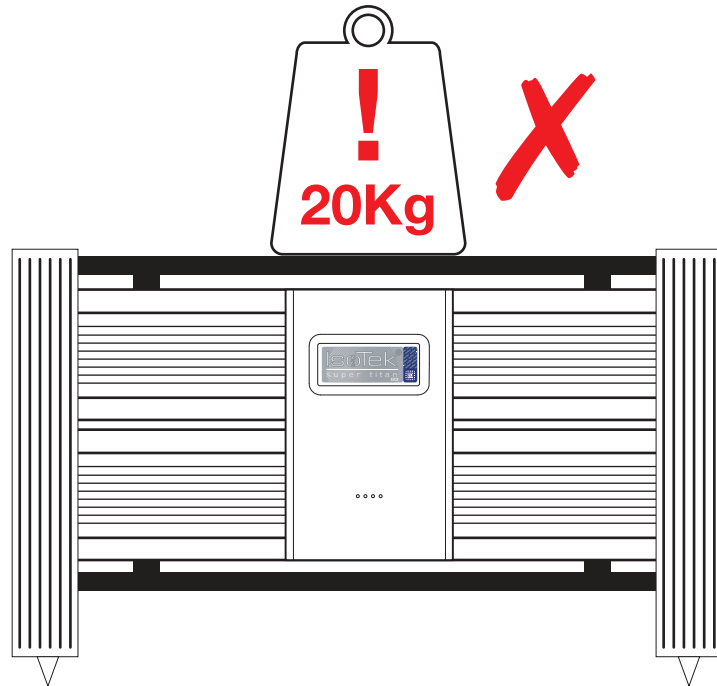
Super Titan features 135,000 Amps of instantaneous protection, this is extremely important in today's society where dangerous power surges can damage sensitive audio equipment.

All fusing is external and in the form of a 32 Amp RCBO. This eliminates any need to enter the product. There is a second RCBO and power inlet and Neutrik Powercon output to power any addition conditioners.

All components are of the highest grade and are under stressed, this gives greater longevity. Ninty percent of internal components used within Super Titan are specifically designed for purpose, thus guaranteeing the highest performance and specification.

B. The product

Weight loading



Safety

Super Titan has its own dedicated built in isolation system so it is not necessary to place it into or onto an audio rack system. However you should insure that Super Titan is placed in a location which allows sufficient ventilation for the internal electronics. Ventilation should not be impeded by covering the ventilation openings with items such as newspapers, table-cloths, curtains etc. No naked flame sources, such as lighted candles should be placed on the unit.

Other items may be placed on top of the Super Titan but only with an additional isolation platform, this is available to purchase separately.

Do not place the unit near heat sources, such as radiators or air ducts. The unit should not be placed in areas which could exceed 25 degrees, for example near vacuum tube amplifiers. Good air circulation is essential to prevent heat build up within the chassis. Do not place the Super Titan on an extremely soft surface, which could block the ventilation intakes on the underside of the unit.

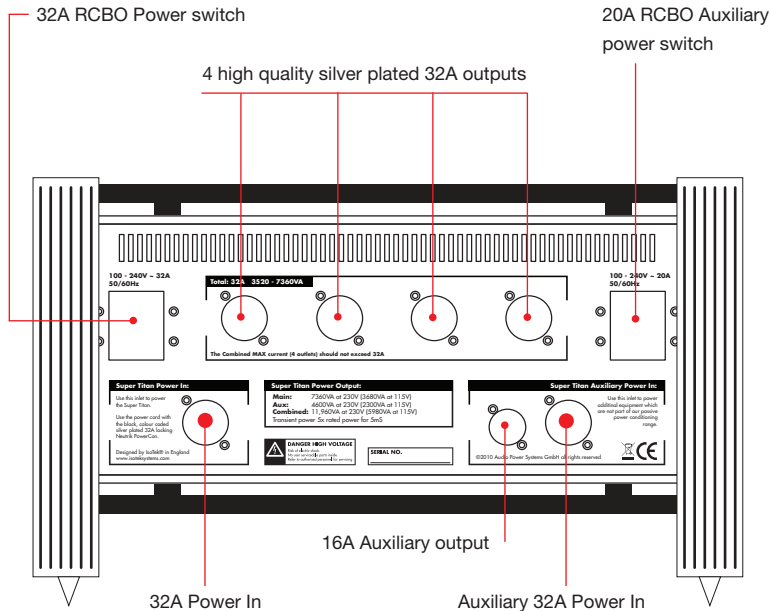
Do not let any liquids spill onto or objects fall into the chassis.

The apparatus must not be exposed to dripping or splashing and no objects filled with liquids, such as vases should be placed on top.

Should either of these events happen immediately switch off the unit at the wall socket, wait for at least one minute, unplug all other cables and return it to your authorised IsoTek dealer for a full service.

C. Installation

Rear elevation of the unit



Equipment coupling

Once the Super Titan is positioned, connect the unit to a mains wall socket. You will notice two very high quality 32Amp power cords are provided. The cable with the black locking Neutrik Powercon is the input cable. The cable with the light grey Neutrik Powercon is the output cable. It is important not to get these two connectors confused.

DO NOT TRY TO CONNECT THE INPUT CABLE TO THE OUTPUT SOCKETS

System integration

Should you wish to connect more than one piece of equipment to Super Titan additional 32 Amp cables can be supplied. Please also note that we do not recommend re-terminating existing cables you have with the Neutrik 32 Amp connectors unless these cables are rated at 32 Amps.

The apparatus must be connected to an earthed mains socket-outlet.

Turn off all equipment you wish to power from the Super Titan. Unplug the power cable(s) relating to these, connect the supplied 32A power cable into the Super Titan. Please remember grey is for the output. Plug the grey connector into the grey output socket at the back of the Super Titan, this will rotate and lock. Now connect the IEC connector into the back of your power amplifier or other high power device.

Connect the 32A input power cord (black Neutrik connector), again this will rotate and lock. Now connect the Super Titan to the wall outlet. Turning the RCBO rated at 32A on the left hand side of the back panel will power the unit.

We recommend if you have the opportunity, to run a 32A feed for the Super Titan. However the unit will function perfectly well from a standard wall socket.

D. Troubleshooting

Fuse location & Power switch

Fault finding

The front panel LEDs are not lit and the unit gives no power.

Check that the 32Amp RCBO on the left hand side of the back panel is turned on. Check that the 32Amp power cable is correctly connected to the left hand power input socket.

Check that the mains cable is securely plugged into the wall socket.

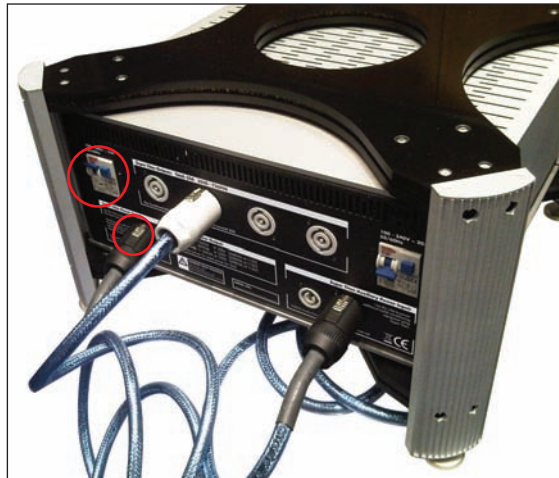
On rare occasions the fuse at the main distribution fuse box may also need to be checked.

We would strongly recommend a simple check of mains polarity. Your local IsoTek authorised dealer will be able to supply a product through us to help you establish this. Mains polarity is of particular importance in markets where European Shuko plugs are used.

Always replace fuses with the same fuse type and rating.

Please contact us by email support@isoteksystems.com if you are in any doubt about the correct fusing.

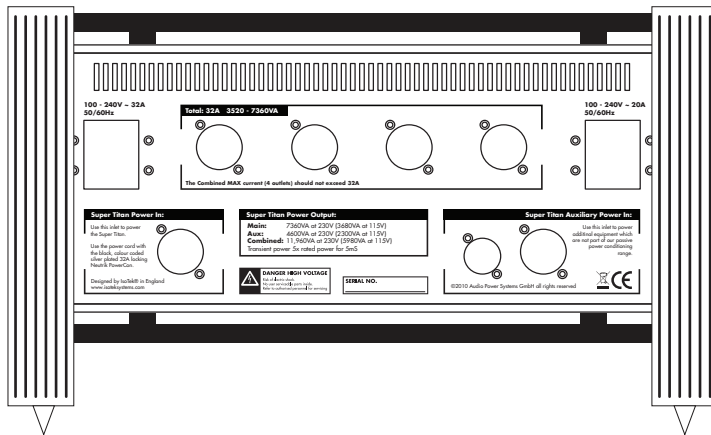
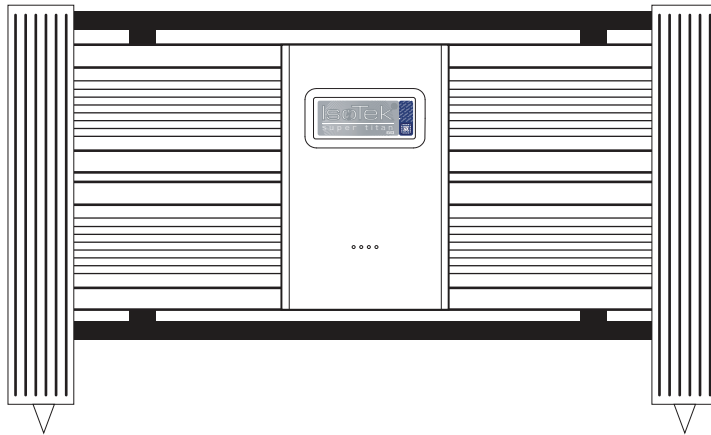
32A RCBO: Power Input



Fuse in UK three pin plug

E. Specifications

Front & rear elevation



Dimensions & sockets

The following information relates only to the IsoTek Super Titan.

Number of outlets:	4
Type of outlets:	32A Silver plated Neutrik unswitched
Mains inlet:	32Amp Neutrik
Mains voltage:	100 - 240V
High current outlets (4):	32Amps
Maximum current:	32Amps continuous
Total available power (230V):	7360W
Transient Power:	35,500W
Dimensions:	500mm x 500mm x 300mm (WxDxH)
Weight:	27.0Kg

Please note, the information given in this document is correct at the time of print. Small production changes in the course of improvement through our ongoing research and development policy may arise. If clarification of any point is required please refer to your local authorised IsoTek dealer or visit www.isoteksystems.com where you can download the very latest information.

January 2011

G. Warranty

Please complete & send

As part of our on-going commitment to the highest standards of customer service, IsoTek offers you the opportunity to extend the standard 2 year product warranty to 3 years, free of charge. Simply visit:

www.isoteksystems.com/register

And follow the on screen instructions. This service will automatically update your details and give confirmation of your registration via email within 24 hours.

IsoTek will not share your personal details with any third parties without your permission.

If you do not have internet access then please forward a copy of your invoice, together with the product serial number and your address to our UK office:

IsoTek Systems,
4 Mozzetta,
Kings Head Yard,
Winchester,
SO23 9HN
England.